



PIUSI

MC Management System Software

Software Installation

The software is compatible with Windows 98, Me, NT4, 2000 & XP
256Mb RAM, 500Mb Free Disk space, USB or Serial Port.

-Check that you have the correct model reader (USB or Serial)

Windows XP sp2 requires a download to be installed from

www.centretank.com/java/msjavx86.exe

Type WINVER in the Run dialog box to check windows version



Insert the PIUSI CD. The CD should automatically run and launch the software installation menu.

CLICK

To Install software, and follow on screen prompts to RUN or OPEN the application depending upon operating system.

NEXT

To confirm the correct application

YES

To accept the license agreement

NEXT

We recommend that the destination folder is left as default to aid in any troubleshooting.

NEXT

Select STANDARD INSTALLATION for a new fresh install
Select UPGRADE to keep existing refuelling data
* Take a copy of any existing installations before proceeding

NEXT

Tick ALL boxes if a fresh install or select just required components

NEXT

Accept default location for program icons and start menu items

The program will now install the required files to the location specified and return to the main launch menu.



If you are using a SERIAL link as shown opposite please now proceed to the software configuration section.

LEGEND



Use Installation CD

CLICK

Follow the direction on the button



Take special note here

OEM

No Un-Authorised Copying or Distribution Permitted

CLICK

To Install drivers for the PW14 adapter and follow on screen prompts to run the software.

NEXT

To confirm the correct application

INSTALL

To install the software

The program will now install the required files to the location specified and return to the main launch menu.



If you are using the Blue USB (1-Wire) link as shown opposite then please remove it from the PC if you have plugged it in.

CLICK

To Install drivers for the USB (1-Wire) adapter and follow on screen prompts to run the software.

NEXT

To confirm the correct application

NEXT

Select to AGREE to the license agreement

NEXT

Select BOTH options for the driver selection screen

NEXT

Follow the prompts to remove the USB lead.

NEXT

We recommend that the destination folder is left as default to aid in troubleshooting.
- Select EVERYONE as the option for the software installation scope.

NEXT

Confirm the installation can now proceed

The program will now install the required files to the location specified.



PIUSI

MC Management System Software

Software Installation



Plug in the USB (1-Wire) adapter once prompted and follow the onscreen instructions on installing new hardware.

Select a USB port that will not need to be used for any other function, as once installed the USB device must not be removed or driver re-installation will be required !

- Proceed to check for new drivers if requested.

OK

To close the information window and continue

NEXT

To proceed with the 1-Wire installation Port Selection Procedure

NEXT

Make sure the following is correct

PC PORT TYPE = USB

ADAPTER REQD = DS9490

PORT NUM = 1

**** If this step fails, remove the USB adapter, restart the PC and try the USB driver installation again. If this fails again, then try changing the port that the USB lead plugs into.**

CLOSE

The installation has now completed and will return to the main launch menu.

LEGEND



Use Installation CD

CLICK

Follow the direction on the button

RED TEXT

Important Information

OEM

No Un-Authorised Copying or Distribution Permitted

Troubleshooting COM Ports and Settings

How to find your COM port for Windows 2000/XP

Open Control Panel

- Click on *System* icon
- Select *Hardware* Tab
- Click on *Device Manager*
- Click to Expand the *Ports* Section

Record the COM port and USB Port settings

How to find your COM port for Windows 98/Me

Open Control Panel

- Click on *System* icon
- Select *Device Manager* Tab
- Click to Expand the *Ports* Section

Record the COM port and USB Port settings

Checking the COM Port Communication Settings

Open Control Panel

- Click on *System* icon
- Select *Device Manager* Tab
- Click to Expand the *Ports* Section
- Right Click on the *COM port* to check and select *Properties*
- Select the *Port Settings* Tab

Bits per second **9600**

Data Bits **8**

Parity **None**

Stop Bits **1**

Flow Control **None**

**PIUSI**

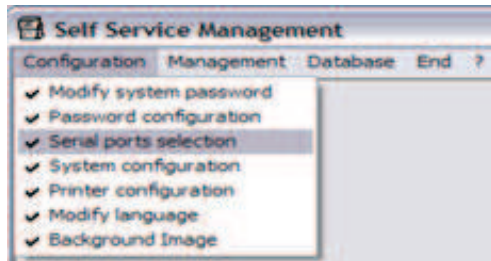
MC Management System Software

Software Configuration

- Launch the application by selecting it from the Program Files Menu



- Select Serial Ports Selection from the Configuration Menu



- Enter the password of "1234"




If you are using a hardwire connection then this is your RS485 port adapter using the interface shown opposite. Select the appropriate port type and number from the top dropdown list.



If you are using a Touch Key connection then this is either your COM port adapter or your USB adapter. Select the appropriate port type and number from the bottom dropdown list.

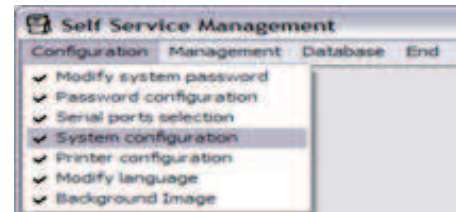
- Click the confirm button and acknowledge the setting selection.

LEGEND

RED TEXT Important Information Take special note here**OEM**

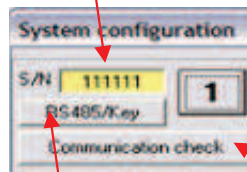
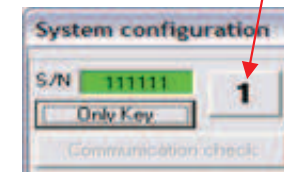
No Un-Authorised Copying or Distribution Permitted

- Select System Configuration from the Configuration Menu



- Enter the serial number of the first MC unit into box 1. The background of the box will now turn yellow. Click on the button next to the serial number box (in this example No. 1) The serial number box will now turn green. Select the type of interface required; RS485 if using the hardwire adapter or Key Only if using the Touch Keys. Click the communication button to verify the connection to the MC – only available if using the Hardwire RS485 adapter.

To view your serial number press   on the pump keypad.

1. Enter the serial number**2. Press the Unit Number button****3. Click this button to change the interface type****4. Click here to check the communication if using a hardwire connection only**

- Exit this screen once the above steps have been undertaken.

**PIUSI**

MC Management System Software

User Operations Guide

How to add a new user



GOOD MORNING
MANAGER



Touch RED Manager Key
and scroll down until
USERS is displayed

USERS

ENTER

USER
ADD ?

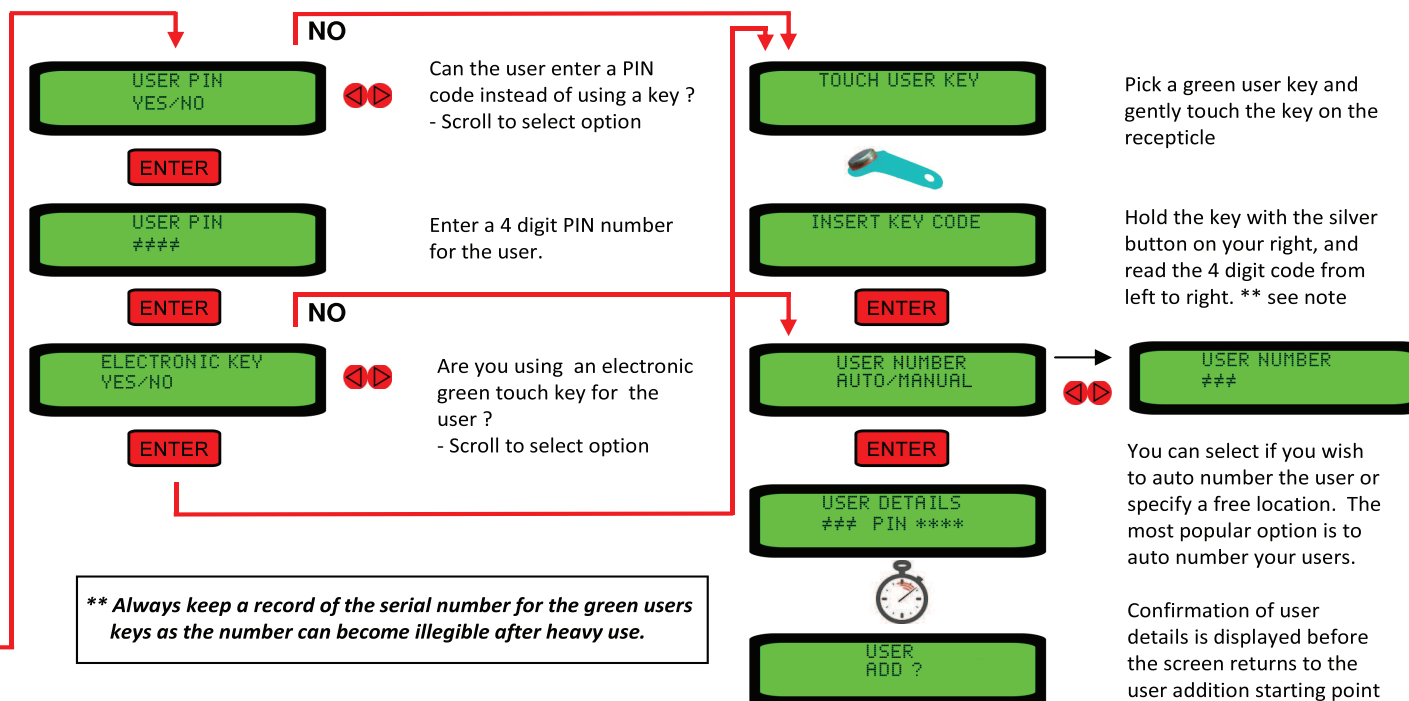
Select the ADD User option

ENTER

USERNAME
USER1_

Enter a USERNAME to
identify the user.

ENTER



How to view configured users

USERS

Touch RED Manager Key
and scroll down until
USERS is displayed

ENTER



Scroll until the option to
VIEW a user is displayed

USER
VIEW?

ENTER

Scroll to view details of each
user present on the system

USERNAME
PIN ****



How to delete configured users

USERS

Touch RED Manager Key
and scroll down until
USERS is displayed

ENTER



Scroll until the option to
DELETE a user is displayed

USER
DELETE?

ENTER

Enter the number of the
user that you wish to
delete without any
preceding zeros. This can
be found by following the
VIEW USER procedure
opposite.

DELETE USER NUMB

ENTER

CONFIRM DELETE ?
USERNAME ****

Details of the user selected
for deletion will be
displayed with a delete
confirmation prompt

ENTER

USER
DELETED



USER
DELETE?

**PLUS!**

MC Management System Software

User Operations Guide

How to add a new user



GOOD MORNING
MANAGER



Touch RED Manager Key
and scroll down until
USERS is displayed

USERS

ENTER

USER
ADD ?

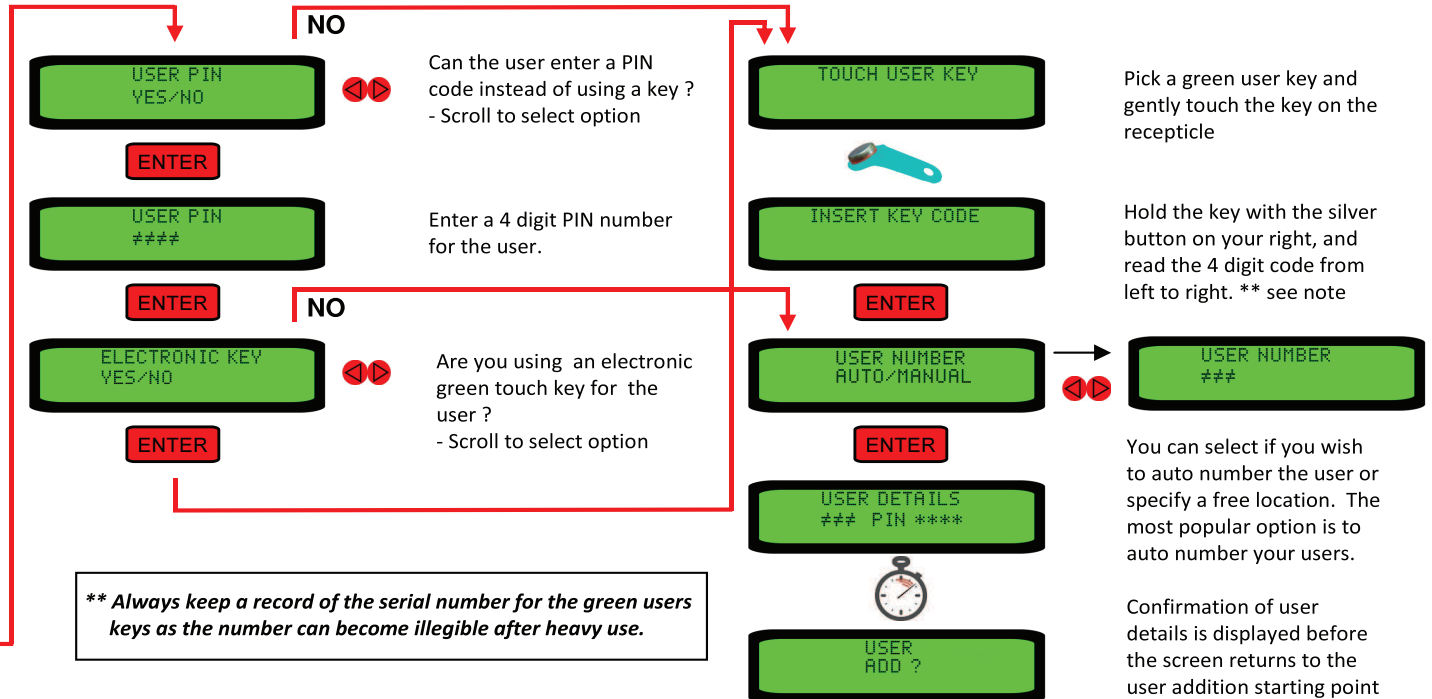
Select the ADD User option

ENTER

USERNAME
USER1_

Enter a USERNAME to
identify the user.

ENTER



How to view configured users

USERS

Touch RED Manager Key
and scroll down until
USERS is displayed

ENTER



Scroll until the option to
VIEW a user is displayed

USER
VIEW?

ENTER

Scroll to view details of each
user present on the system

USERNAME
PIN ****



How to delete configured users

USERS

Touch RED Manager Key
and scroll down until
USERS is displayed

ENTER



Scroll until the option to
DELETE a user is displayed

USER
DELETE?

ENTER

Enter the number of the
user that you wish to
delete without any
preceding zeros. This can
be found by following the
VIEW USER procedure
opposite.

DELETE USER NUMB

ENTER

CONFIRM DELETE ?
USERNAME ****

ENTER

Details of the user selected
for deletion will be
displayed with a delete
confirmation prompt

USER
DELETED



USER
DELETE?



PIUSI

MC Management System Software

System Options Guide

LEGEND

ENTER

Press this key



Scroll in the direction of the arrow



Scroll either left or right



Touch USER Key



Touch RED Manager Key

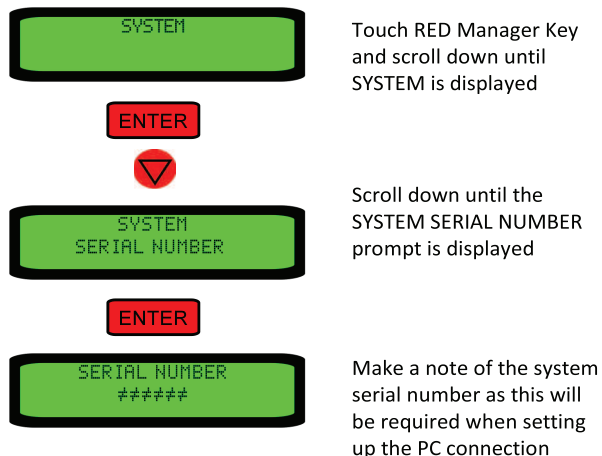


Wait Please...

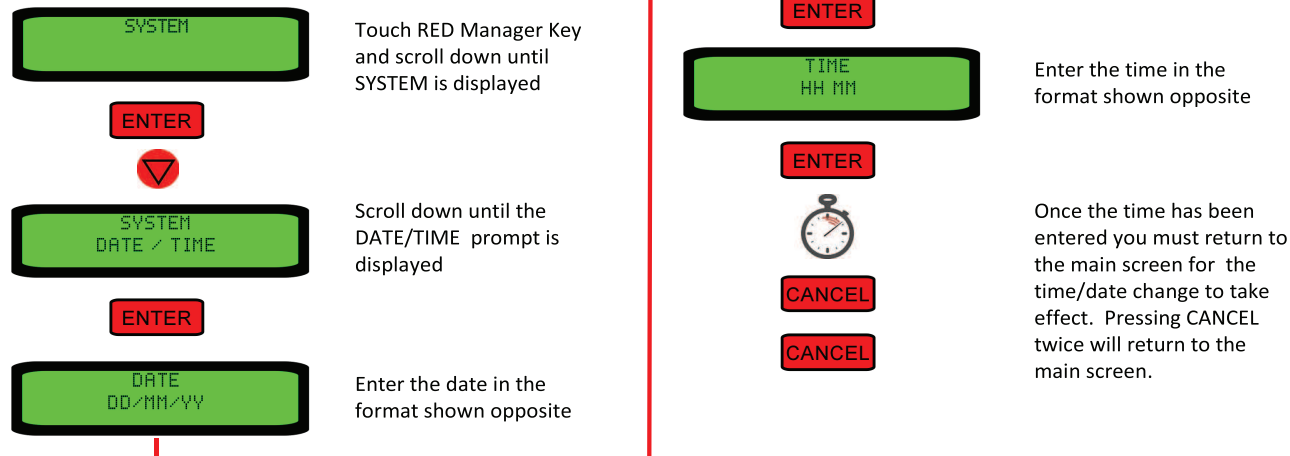
OEM

No Un-Authorised Copying or Distribution Permitted

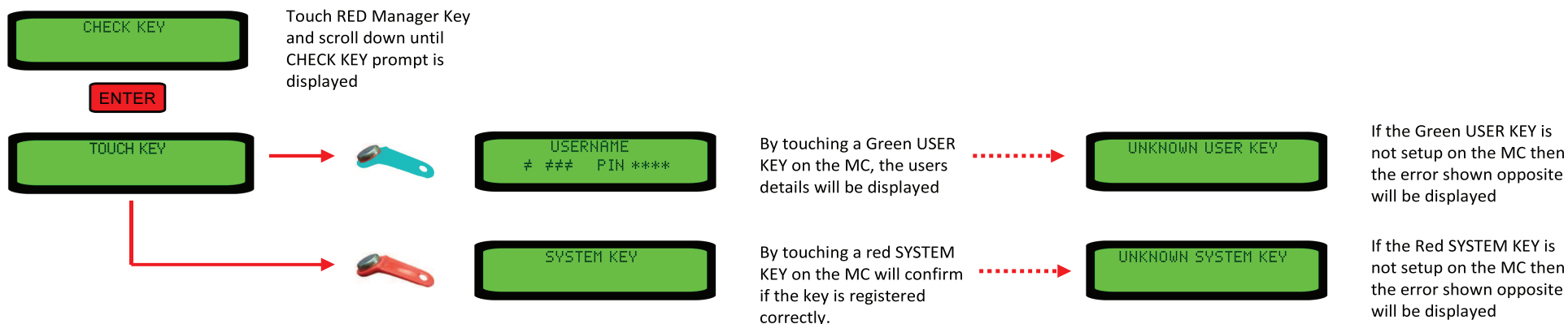
How to find the system serial number



Setting the date & time



Checking if a key is valid on the MC System



**PIUSI**

MC Management System Software

Data Transfer

LEGEND

ENTER

Press this key



Scroll in the direction of the arrow



Scroll either left or right



Touch USER Key



Touch RED Manager Key



Wait Please...

OEM

No Un-Authorised Copying or Distribution Permitted

When touching the key, use a very light pressure !**** Heavy pressure will irreversibly damage the key ****